



**UNITED STATES DEPARTMENT OF AGRICULTURE
FOREST SERVICE
WILLAMETTE NATIONAL FOREST
SPRINGFIELD, OREGON**

ORDER # 06-18-01-23-25

**FOREST ORDER
LOOKOUT FIRE EMERGENCY AREA CLOSURE**

Pursuant to 16 U.S.C. § 551 and 36 CFR § 261.50 (a) and (b), and to provide for public safety, the following acts are prohibited on the National Forest System (“NFS”) areas, roads, and trails described below within the administrative boundaries of the Willamette National Forest. This Order is effective on August 26, 2023, through September 26, 2023, unless otherwise rescinded sooner. This order supersedes and rescinds ORDER # 06-18-01-23-22, which was signed August 18, 2023 by Forest Supervisor David Warnack.

PROHIBITIONS:

1. Being on the road. **36 CFR § 261.54(e)**
2. Being on a trail **36 CFR § 261.55(a)**
3. Entering into or being upon National Forest System Lands closed for the protection of public health and safety. **36 CFR § 261.53(e)**

CLOSURE AREA:

The closure area is located within the State of Oregon, Lane and Linn Counties, and within the Administrative Boundaries of the Willamette National Forest. The closure applies to the NFS areas, roads, and trails and trailheads described below. The closure area is depicted on the attached map, which is incorporated into this order as “Exhibit A”. All areas, roads, trails, campgrounds, and rec sites in this closure area are closed, except for Lost Prairie Campground and its access road FR 2000-068, and Clear Lake Resort and its access road FR 2600-775, which remain open. Roads closed by this order are depicted in “Exhibit B” and recreation sites, trails and campgrounds closed by this order are depicted in “Exhibit C”.

Area Closure Description

The closure boundary starts at the junction of Hwy 126 and Forest Road (FR) 2620-125, Township 16S, Range 4E, Section 21. The closure boundary proceeds north along FR 2620-125 to Quartz Creek and then proceeds north along Quartz Creek to the McKenzie River Ranger District and Sweet Home Ranger District border. It then continues along that boundary northeast approximately 6 miles to the intersection with FR 2044 (Latiwi Creek Road). The closure boundary follows and includes 2044 north to the junction with FR 2044-202. The boundary continues along 2044, no longer including the road, until the intersection with U.S. Highway 20. The closure boundary continues east along U.S. Highway 20, approximately 26 miles, until the intersection with Forest Road 2676 and Little Nash Sno-Park. The closure boundary follows FR 2676 south, until the west section line of Township 14S, Range 7E, Section 3. The boundary follows the section line south until the Mt. Washington Wilderness boundary. The closure boundary follows the wilderness boundary south until Highway 242,
ORDER #06-18-01-23-25

crosses Highway 242 south to the boundary of the Three Sisters Wilderness and follows the Three Sisters Wilderness boundary west and south until the Pat Saddle Trailhead. From the trailhead, the closure boundary follows and includes the French Pete Trail (#3311) to the French Pete Trailhead and Forest Road 19. The closure boundary follows but does not include Forest Road 19 north to the intersection with Highway 126. The closure boundary then follows the Forest Service boundary west along Highway 126 to the beginning point.

EXEMPTIONS:

Pursuant to 36 CFR § 261.50(e)(1) and (4), the following persons are exempt from this Order:

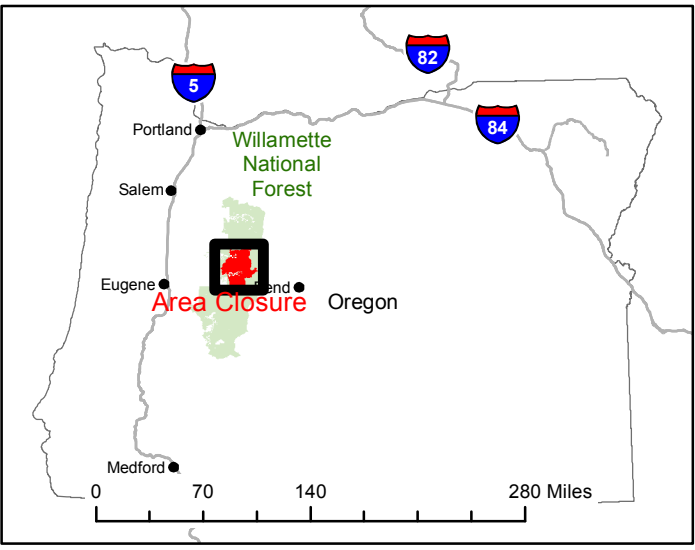
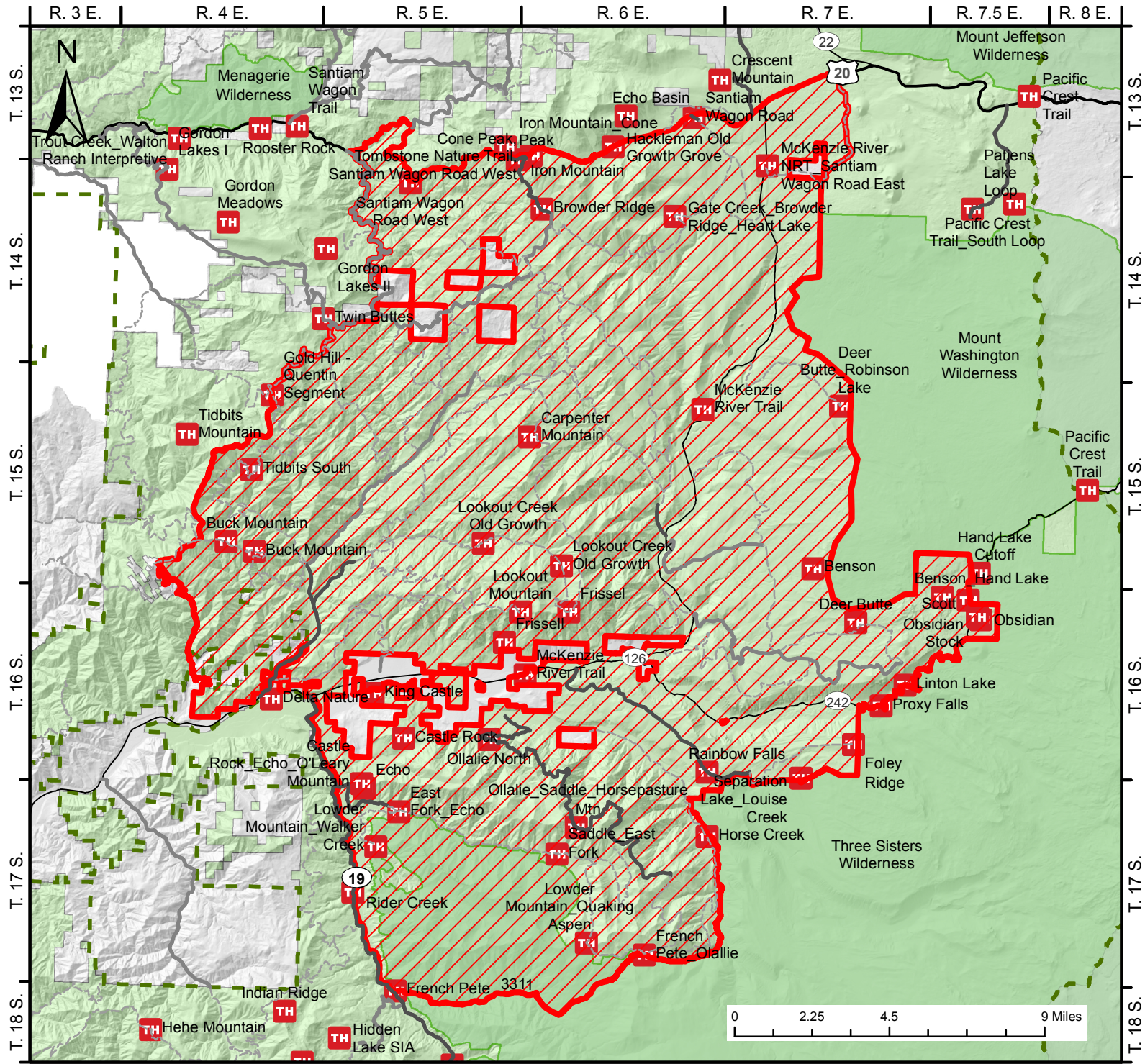
- (1) Persons with Forest Service Permit No. FS-7700-48 (Permit for Use of Roads, Trails, or Areas Restricted by Regulation or Order) specifically exempting them for this Order.
- (2) Any Federal, State, or Local Officer, or member of organized rescue or fire fighting force in the performance of an official duty.

These prohibitions are in addition to the general prohibitions in 36 CFR Part 261, Subpart A.






Violations of these prohibitions are punishable by a fine of not more than \$5,000.00 for an individual or \$10,000.00 for a corporation or imprisonment for not more than six months or both. 16 U.S.C. § 551 and 18 U.S.C. § 3551, 3571, and 3581.

Executed in Springfield, Oregon on this 27 day of August 2023.

Duane Bishop
Deputy Forest Supervisor
Willamette National Forest



Lookout Fire Closure Exhibit A
Closure Number 06-18-01-23-25
Willamette National Forest 541-225-6300

-  Area Closure
-  Trails
-  USFS Admin Boundary
-  Willamette NF
-  Wilderness



Lookout Fire Closure Exhibit B
Closure Number 06-18-01-23-25
Willamette National Forest

Forest Roads Closed- Refer to the Map in Exhibit A

**Note: Any and all FS roads within the closure including spur roads are closed, even if not listed below.
This list only includes roads with more than 0.5 miles within the closure.**

1500000	1506000	1510611	1900438	2044104	2633720	2647533	2653728	2655535
1500050	1506300	1510612	1900447	2044120	2633723	2649000	2653730	2655542
1500070	1506305	1510621	1900482	2044123	2633725	2649614	2653735	2655565
1500080	1506320	1510622	1900491	2044155	2633789	2649619	2653737	2655616
1500090	1506325	1513000	1900496	2600000	2633796	2649620	2653748	2656000
1500104	1506330	1513504	1900500	2600220	2638000	2649622	2653750	2657000
1500105	1506335	1513505	1900505	2600250	2638344	2649624	2653752	2657804
1500120	1506350	1513506	1993000	2600252	2638348	2649635	2653755	2657805
1500130	1506357	1513514	1993300	2600275	2638352	2649636	2653760	2657809
1500134	1506359	1516000	1993315	2600280	2638354	2649640	2653762	2657822
1500136	1506360	1516005	1993340	2600300	2638356	2649643	2653764	2657823
1500500	1506362	1516030	1993393	2600302	2639000	2649648	2653765	2657830
1500502	1506363	1516032	1993400	2600350	2639121	2649651	2653769	2657831
1500505	1506365	1516664	1993405	2600560	2639164	2649660	2653780	2657833
1500520	1506630	1516666	1993420	2600700	2639480	2649670	2653782	2657834
1500522	1506632	1516668	1993430	2600705	2639490	2649672	2653800	2657835
1500527	1506660	1516669	1993470	2600710	2643000	2649686	2653815	2657836
1500535	1507000	1516672	1993480	2600713	2643030	2649688	2653831	2657839
1500540	1507455	1517000	1993551	2600720	2643405	2649689	2654000	2657840
1500550	1507465	1517560	1993555	2600722	2643410	2649690	2654780	2657841
1500560	1507466	1517563	1993556	2600726	2643411	2649696	2654782	2657848
1500610	1508000	1517655	1993560	2600728	2643429	2649748	2654789	2657849
1500612	1508412	1517660	1993585	2600730	2643430	2649760	2654790	2657850
1500618	1508420	1517670	1993720	2600735	2643432	2649769	2654791	2657851
1500695	1508424	1595000	1994000	2600740	2643436	2649770	2654795	2657855
1500700	1508426	1595340	1995000	2600750	2643440	2650000	2654797	2657859
1500702	1509000	1595351	1995590	2600765	2643443	2650610	2654798	2657865
1500704	1509545	1595365	2000000	2600770	2643450	2650611	2655000	2657871
1500705	1509551	1595367	2000020	2600780	2643455	2650614	2655503	2657874
1500707	1509610	1595375	2000024	2600786	2643460	2650616	2655504	2657876
1500709	1509620	1595460	2000047	2600895	2643469	2653000	2655505	2657885
1500720	1509636	1598000	2000049	2620124	2643470	2653685	2655506	2664000
1500724	1509826	1598168	2000060	2620126	2643471	2653714	2655507	2664510
1500731	1509827	1598170	2000061	2633000	2643473	2653715	2655508	2664511
1500732	1509829	1598175	2000150	2633700	2643476	2653718	2655510	2664515
1500735	1509830	1598212	2000155	2633701	2643480	2653720	2655511	2664516
1500740	1509853	1598215	2000156	2633702	2643485	2653723	2655514	2664520
1501000	1509877	1598240	2000245	2633703	2647000	2653724	2655515	2664529
1501198	1510000	1900410	2000247	2633704	2647505	2653726	2655516	2664545
1501202	1510610	1900411	2044000	2633706	2647521	2653727	2655520	2664555

2672000	2672411	2672432	2672655	2672670	2672685	2676000	4200000
2672305	2672415	2672637	2672656	2672671	2672689	2676710	4200208
2672406	2672420	2672650	2672659	2672675	2672700	2820545	4200250
2672410	2672425	2672651	2672667	2672676	2672720	2820550	4200260

Lookout Fire Closure Exhibit C

Closure Number 06-18-01-23-25 Willamette National Forest

Closed NFS Campgrounds and Recreation Sites:

Alder Springs Campground	Campground	equestrian)
Benson/Tenas Trailhead	Horse Creek Trailhead	Olallie North Trailhead
Blue Pool and Tamolitch Falls Trailhead/Rec Site	Horsepasture Trailhead	Ollalie Campground/Day Use/Boat Launch
Browder Ridge Trailhead	Ikenick Sno-Park	Paradise Boat Launch/Campground
Buck Mountain East and West Trailhead	Ice Cap Campground	Pat Saddle Trailhead
Carpenter Mountain Trailhead and Lookout/Cabin	Kings Castle Trailhead	Proxy Falls Trailhead
Castle Rock Trailhead	Koosah Falls Day Use Site	Rainbow Falls Trailhead
Cold Water Cove Campground	Lakes End Campground	Robinson Lake Trailhead
Deer Creek Trailhead	Little Nash Sno-Park	Saddle Dam Boat Launch
Echo Boat Launch	Limberlost Campground	Sahalie Falls Day Use Site Day Use/Rec Site
Echo Trailhead	Linton Lake Trailhead	Santiam Wagon Road – Sevenmile Trailhead
Fingerboard Prairie Trailhead	Lookout Campground	Santiam Wagon Trailhead
Fish Lake Remount Depot and Day Use Area	Lookout Creek Old Growth Trailhead	Scott Lake Campground
Foley Ridge Trailhead	Lookout Mountain Lower and Upper Trailhead	Scott Trailhead
French Pete Trailhead	Lower East Fork Trailhead	Separation Lake Trailhead
Frissell Boat Launch	Lower Lowder Mountain Trailhead	Sevenmile Horse Camp
Frissell Trailhead	McKenzie Bridge Campground and Boat Launch	Slide Creek Campground
Gate Creek Trailhead	McKenzie River National Scenic Trail All Trailheads	Sunnyside Campground
Goldhill- Quentin Segment Trailhead	McKenzie River Scenic Viewpoint Day Use	Tenas Lakes Trailhead
Hackleman Old Growth Grove Interpretive Site and Trail	Mona Campground	Tidbits South Trailhead
Hand Lake Shelter	O’Leary/Castle Rock Trailhead	Tombstone Pass Trailhead
Horse Creek Group	Obsidian Trailhead (hiker and	Trail Bridge Campground
		Upper East Fork Trailhead
		Upper Lowder Mountain Trailhead

Closed NFS Trails:

Benson - 3502	Goldhill - Quentin Segment - 3370	Lookout Creek Old Growth - 4105	Saddle - 3326
Browder Ridge - 3409	Hackleman O.G.Grove - 3411	Lost Creek - 3541	Santiam Wagon Road East - 3535
Buck Mountain - 3304	Hand Lake - 3513	Lowder Mountain - 3329	Santiam Wagon Road West - 3413
Carpenter Mountain - 3302	Hand Lake Cutoff - 4344	McKenzie River Trail - 3507	Scott - 3531
Castle Rock - 3506	Heart Lake - 3407	O Leary Mountain - 3321	Scott-Obsidian Tie - 3531.1
Clear Lake - 4341	Horse Creek - 3514	Obsidian - 3528	Tidbits South - 3328
Deer Butte - 3508	Horsepasture Mtn - 4347	Olallie - 3529	Tombstone Nature - 3419
East Fork - 3308	Iron Mountain - 3389	Quaking Aspen - 3332	Walker Creek - 3330
Echo - 3309	King Castle - 4326	Rainbow Falls - 3543	Waterfalls - 3503
French Pete - 3311		Robinson Lake - 4342	